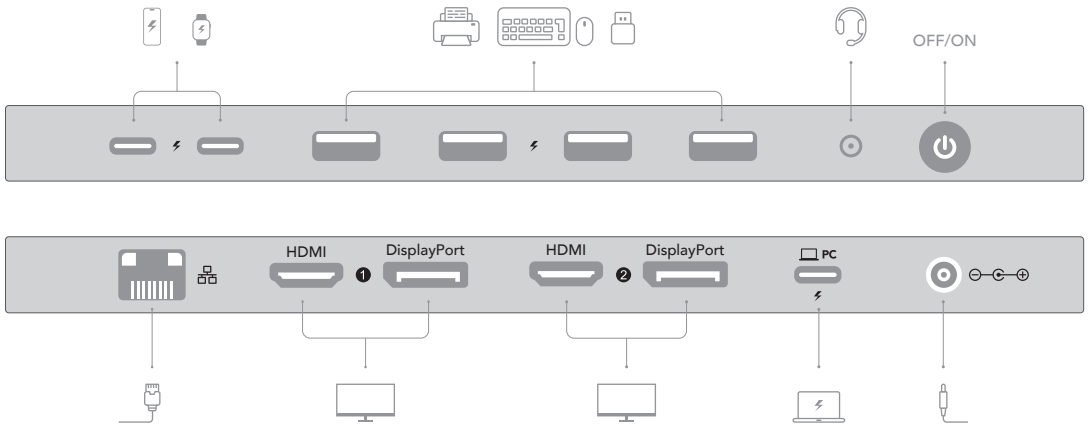
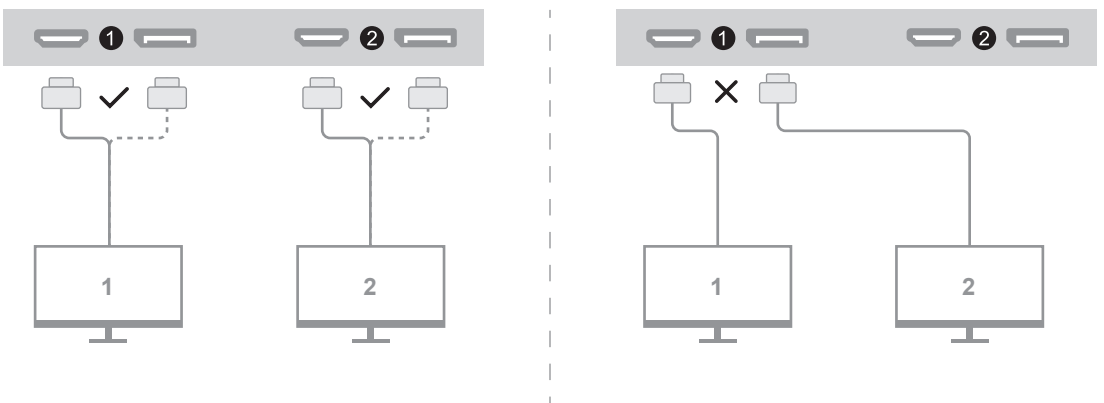


1 Ports Overview



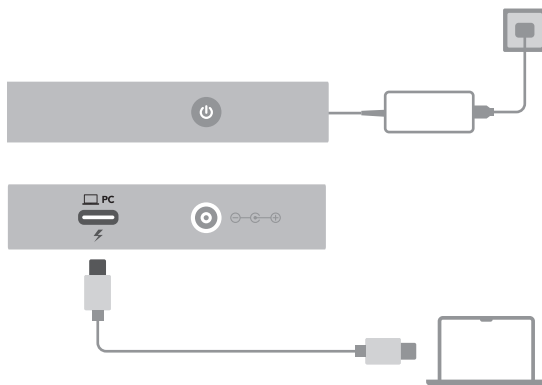
2 Connect Monitors

When connecting two monitors, plug one cable in zone 1 and another in zone 2.



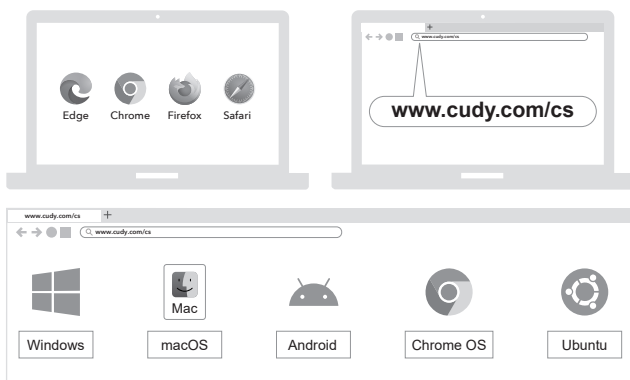
3 Power on and Connect Your Host Device

Please use the "PC" port on the back of the docking station and the host's port that accepts PD charging.



4 Download Drivers

Visit www.cudy.com/cs, and you will see the DisplayLink driver page. Follow the pictures to download the driver. Users of Windows 10/11 or ChromeOS R51+ may skip step 4 and 5, as the installation will complete automatically when the system is connected to the Internet.

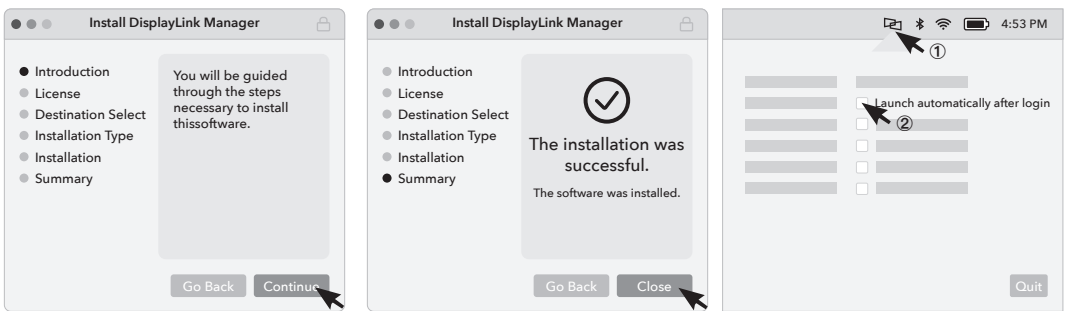


Note: If you are not using the latest OS, you may find the driver for legacy versions by clicking on "Legacy Release".



5 Install the Driver

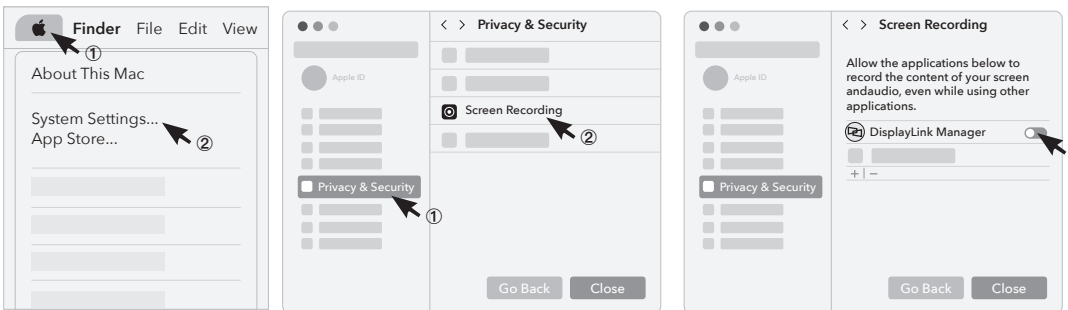
Double-click the downloaded file and complete the installation. Give "screen recording" permission if required.



macOS only

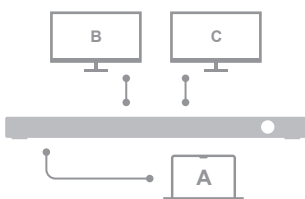
macOS user: If you accidentally rejected the permission request or the external monitor doesn't light up, follow the pictures to give the permission.

Android user: if you accidentally rejected the permission request, please unplug the cable and plug in again to let the request pop up.



6 Configure Monitor Settings

Scan the QR code to learn how to configure Extend/Mirror modes on different systems.



www.cudy.com/qr_cs_display

FAQ: How to fix if there is no audio from the audio jack?

A: Please open the audio settings in your system and select the "USB audio" as the output.

FAQ: How to fix the black screen on Netflix, Hulu, Crunchyroll, Disney+, etc. platforms?

A: Please open the settings panel of the browser you use to access the streaming websites. Find the "Hardware Acceleration" item and turn it off. Change browser if not successful. This method may not be effective on some systems.