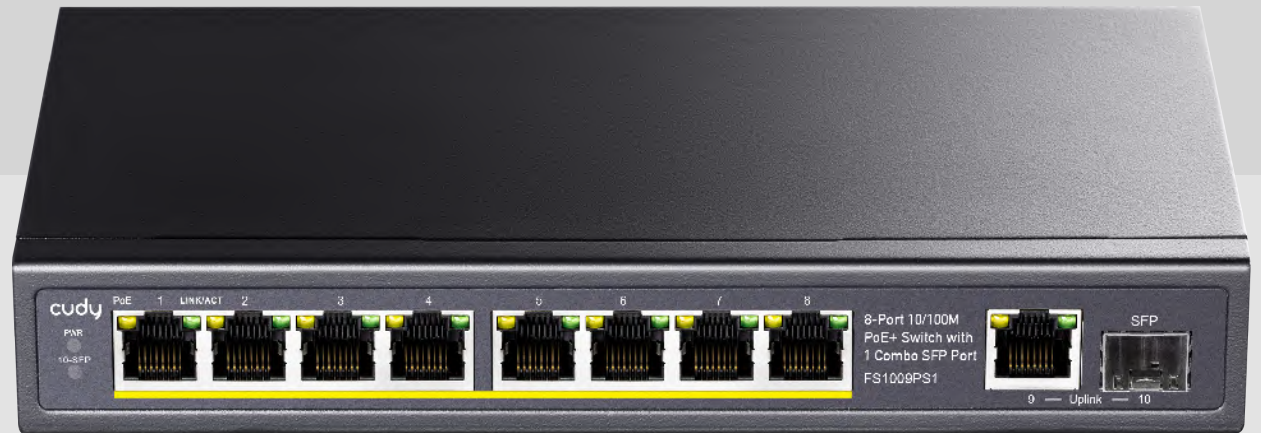




Model

FS1009PS1

8-Port 10/100M PoE+ Switch
with 1 Combo SFP Port



1. Overview

8 ports 10/100Mbps + 1 combo with 8PoE Ethernet Switch is a security surveillance Ethernet Switch which aims at Ethernet high def surveillance and Ethernet project security system The product fully combines the characteristics of security surveillance, provides fast packet forwarding ability and abundant backplane bandwidth, which ensures clear image and fuent transmission.

2. Features

1. Conforms to IEEE802.3, IEEE 802.3u, IEEE802.3z, IEEE802.3af, IEEE802.3at
2. Provides 8 10/100Base-TX ports and 1 combo port
3. Provides 8 PoE injector and 125W power adapter
4. High back-plane bandwidth 3.6Gbps
5. IEEE802.3x Flow control

3. Specification

	Model	FS1009PS1
Power	Power Supply	External Power Adaptor
	Voltage Range	DC 48V ~ 52V
	Consumption	< 8W
Ethernet	Speed	1~8 Port: 10/100/Mbps Uplink:1combo
	Transmission Distance	100Metres
Network Switch	Ethernet Standard	IEEE 802.3 802.3u 802.3ab 802.3af/at
	Switching Capacity	3.6G
	Transfer Rate	14 880 pps for 10Mbps
		148 800 pps for 100Mbps
148 8000 pps for 1000Mbps		
MAC Adress	2K MAC sddress table	
Link/ACT	On(Green)	The port is connecting
	Blinks	The port is receiving or transmitting data.
	Off	The port is not linked successfully with the device
POE	On(Oranfe)	PD is connected
	Off	No PD is connected or power forwarding fails
Environment	Working Temperature	0~40°C
	Storage Temperature	-40~70°C
	Humidity Non Condensing	0~85%
Mechanical	Dimension L*W*H	190*100*28mm
	Color	Gray