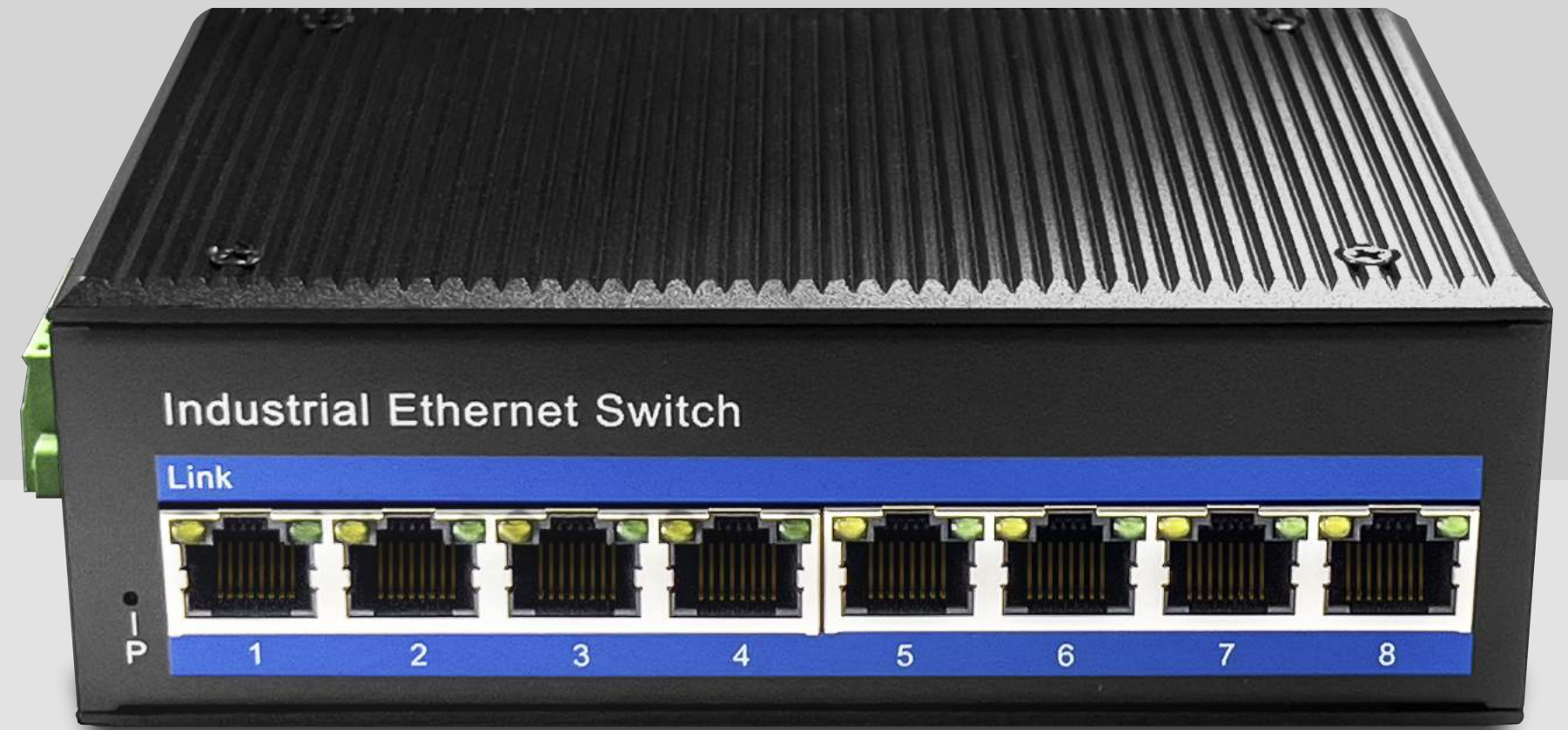




Model

IF 1008

8-Port 10/100M Industrial Switch



[Datasheet](#)

## Description

IF1008 an hardened 8-port Industrial Ethernet Switch, provides non-blocking wire-speed performance in harsh industrial environment. It also provides 8-port 10/100/100BASE-TX RJ45 copper interfaces delivered in an IP40 rugged, strong case with redundant power system. Its slim case is suitable for such applications as surveillance system deployments, control management and wireless service in climatically demanding environments with wide temperature range from -40°C to 85°C.

The IF1008 series provides the flexibility to all kinds of 10/100Mbps Ethernet Media on RJ-45 port and performs highly stable fiber performance.

The IF1008 series is packaged in a compact IP40 case that allows either DIN rail or panel mounting to have efficient usage of cabinet space. It provides an integrated power supply with a wide range of voltages for worldwide operation. It also offers dual-redundant, reversible polarity 12V DC to 52V DC power supply inputs for high availability applications requiring dual or backup power inputs.

## Features

- 8-port 10/100Base-Tx RJ-45 with auto negotiation and auto-MDI/MDI-X function
- 12V to 52V DC, redundant power input
- -40°C to 85°C operating temperature
- IP40 Aluminum housing
- Supports 6KV DC Ethernet ESD protection
- Supports 6KV DC EFT protection for power line
- Free Fall, Shock and Vibration Stability
- DIN-rail and wall-mountable hardware design



# Specifications

<b>Model No.</b>	IF1008
<b>10/100BASE-TX Port</b>	8 port RJ-45 auto-MDI / MDI-X
<b>Performance Specification</b>	Bandwidth: 1.6Gbps
	Packet Buffer Memory:1Mbit
	Packet Forwarding Rate:1.2Mpps
	MAC Address Table: 2K
<b>Installation</b>	DIN rail
<b>Maximum Frame Size</b>	9000bytes packet size
<b>Flow Control</b>	Back pressure for half duplex, IEEE 802.3x pause frame for full duplex
<b>Enclosure</b>	IP40 aluminum housing
<b>LED Indicator</b>	Power: Red
	Ethernet: Yellow
	POE: Green
<b>Power Input</b>	12 to 52V DC redundant power
<b>Power Consumption</b>	3 watts max
<b>Surge protection</b>	±4KV
<b>Network Protocols</b>	IEEE802.3 10BASE-T;
	IEEE802.3i 10Base-T;
	IEEE802.3u;100Base-TX/FX;
	IEEE802.3ab 1000Base-T;
	IEEE802.3z 1000Base-X;
	IEEE802.3x;

<b>Network cables</b>	10BASE-T: Cat3,4,5 UTP(≤100 meter)
	100BASE-TX: Cat5 or later UTP(≤10meter)
	1000BASE-TX: Cat6 or later UTP(≤100 meter)
<b>MTBF</b>	>300,000hours
<b>Dimensions (W x D x H)</b>	143.7 x 103 x 47.7 mm
<b>Weight</b>	Product Weight: 0.52KG
	Packing Weight: 0.62KG
<b>Working Environment</b>	Working temperature: -40~85°C
	Storage temperature: -40~85°C
	Relative Humidity: 5%~95 %( no condensation)

# Dimensions

